

Name _____

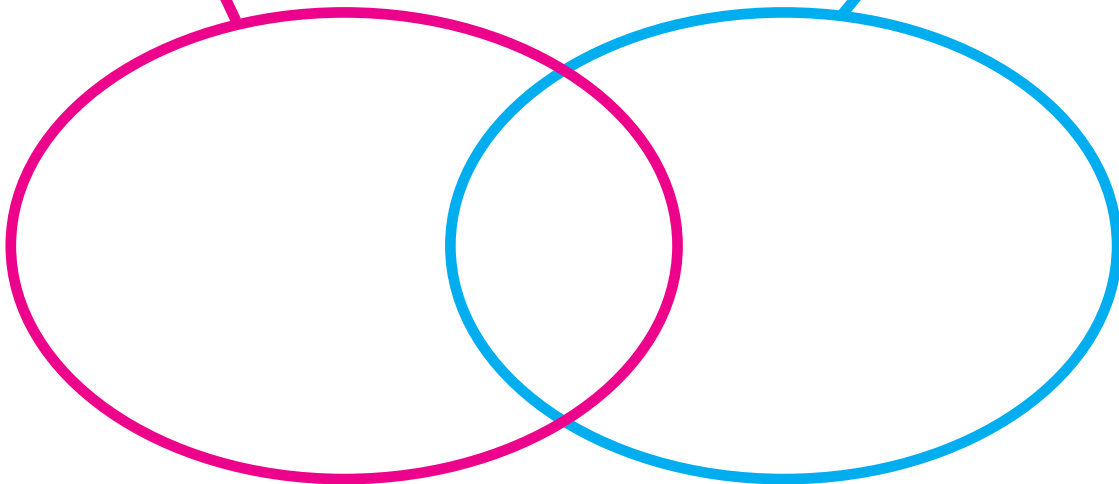
L2



Put all of the positive divisors of 20 and of 28 in this string picture.

Positive divisors of 20

Positive divisors of 28



Complete these number sentences.

$$20 \square 28 = \underline{\hspace{2cm}}$$

$$10 \square 28 = \underline{\hspace{2cm}}$$

$$35 \square 28 = \underline{\hspace{2cm}}$$

Name _____

L2

**

Zim is a secret whole number.

Clue 1

$$\text{Zim} \square 24 = 72$$

Zim could be _____, _____, _____, or _____.

Clue 2

$$\text{Zim} \square 30 = 6$$

Zim could be _____, _____, or _____.

Clue 3



Who is Zim? _____

Name _____

L2

Pom is a secret whole number.

Clue 1

$$\text{Pom} \square 28 = 7$$

Find a pattern for the numbers that Pom could be.

Pom could be _____, _____, _____, _____, _____, _____, _____,
_____, _____, _____, _____, and so on.

Clue 2



Find a pattern for the numbers that Pom could be.

Pom could be _____, _____, _____, _____, _____, _____, and so on.

Clue 3

In this list, Pom is the greatest number less than 1000.

Who is Pom? _____

Name _____

L10	*
-----	---

With the given information, list which of these operations could be * :

T_D **↑** **↓** **□** **+** **-** **×**

Information	Possibilities for *
$6 * 3 = 3$	
$8 * 4 = 0$	
$2 * 2 = 0$	
$2 * 2 = 4$	
$6 * 6 = 6$ and $3 * 2 = 1$	
$9 * 6 \neq 3$	
$8 * 6 \neq 8$	
$1 * 1 \neq 1$	

Name _____

L10

**

Nim appears in at least three places in this table for one of these operations:

T_D \uparrow \downarrow \square $+$ $-$ \times

Which of these operations has these three entries the same? _____

*	3	4	5	6
3				
4				Nim
5			Nim	
6		Nim		

Who is Nim? _____

Nam appears in at least four places in this table for one of the seven operations listed above.

Which of these operations has these four entries the same? _____

*	1	2	3	4
1				
2	Nam		Nam	
3		Nam		
4		Nam		

Who is Nam? _____

Name _____

L11

*

Each table is for one of these operations:

T_D	T_M	$T_{<}$	$T_{>}$
\sqcap	\sqcup	\downarrow	\uparrow
	$+_{10}$	$-_{10}$	\times_{10}

Label the tables.

	5	7
3	8	0
4	9	1

	1	5
1	0	1
5	0	0

	2	5
3	1	1
7	1	1

Name _____

Each table is for one of these operations:

T_D	T_M	$T_{<}$	$T_{>}$
\sqcap	\sqcup	\downarrow	\uparrow
$+_{10}$	$-_{10}$	\times_{10}	

Label the tables.

	1	3
6	1	1
7	1	0

	1	4
2	2	8
5	5	0

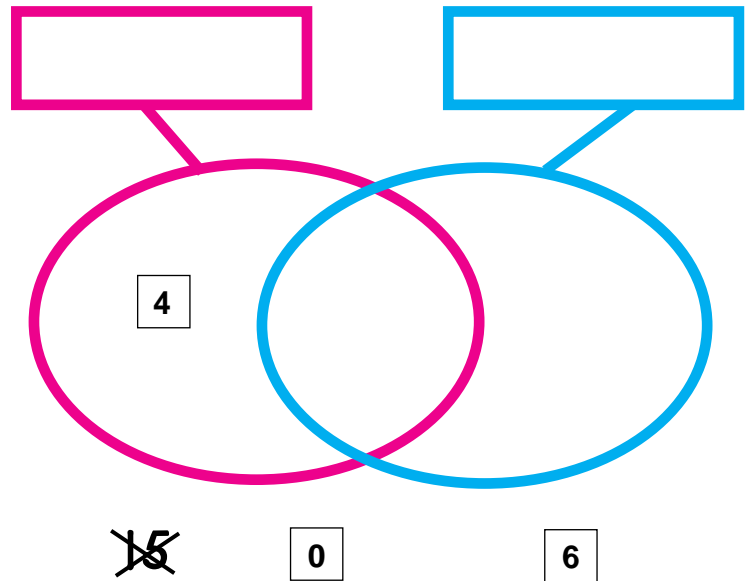
	1	4
2	2	8
5	5	5

	2	3
3	1	0
4	*	1

Name _____

Use the clues in the picture to cross out labels the strings cannot have. Then label the strings.

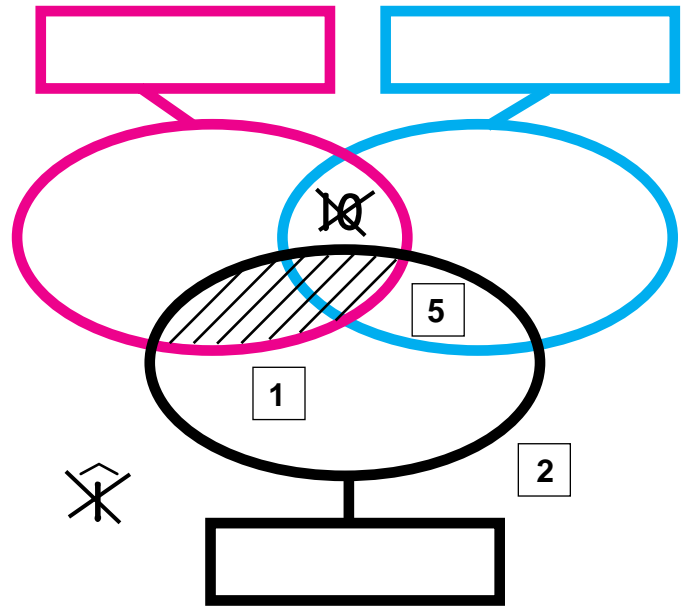
RED	BLUE
MULTIPLES OF 2	MULTIPLES OF 2
MULTIPLES OF 3	MULTIPLES OF 3
MULTIPLES OF 4	MULTIPLES OF 4
MULTIPLES OF 5	MULTIPLES OF 5
MULTIPLES OF 10	MULTIPLES OF 10
ODD NUMBERS	ODD NUMBERS
POSITIVE PRIME NUMBERS	POSITIVE PRIME NUMBERS
GREATER THAN 50	GREATER THAN 50
LESS THAN 50	LESS THAN 50
GREATER THAN 10	GREATER THAN 10
LESS THAN 10	LESSTHAN 10
POSITIVE DIVISORS OF 12	POSITIVE DIVISORS OF 12
POSITIVE DIVISORS OF 18	POSITIVE DIVISORS OF 18
POSITIVE DIVISORS OF 20	POSITIVE DIVISORS OF 20
POSITIVE DIVISORS OF 24	POSITIVE DIVISORS OF 24
POSITIVE DIVISORS OF 27	POSITIVE DIVISORS OF 27



Name _____

Use the clues to cross out labels the strings cannot have.
Then label the strings.

RED	BLUE	BLACK
MULTIPLES OF 2	MULTIPLES OF 2	MULTIPLES OF 2
MULTIPLES OF 3	MULTIPLES OF 3	MULTIPLES OF 3
MULTIPLES OF 4	MULTIPLES OF 4	MULTIPLES OF 4
MULTIPLES OF 5	MULTIPLES OF 5	MULTIPLES OF 5
MULTIPLES OF 10	MULTIPLES OF 10	MULTIPLES OF 10
ODD NUMBERS	ODD NUMBERS	ODD NUMBERS
POSITIVE PRIME NUMBERS	POSITIVE PRIME NUMBERS	POSITIVE PRIME NUMBERS
GREATER THAN 50	GREATER THAN 50	GREATER THAN 50
LESS THAN 50	LESS THAN 50	LESS THAN 50
GREATER THAN 10	GREATER THAN 10	GREATER THAN 10
LESS THAN 10	LESSTHAN 10	LESS THAN 10
POSITIVE DIVISORS OF 12	POSITIVE DIVISORS OF 12	POSITIVE DIVISORS OF 12
POSITIVE DIVISORS OF 18	POSITIVE DIVISORS OF 18	POSITIVE DIVISORS OF 18
POSITIVE DIVISORS OF 20	POSITIVE DIVISORS OF 20	POSITIVE DIVISORS OF 20
POSITIVE DIVISORS OF 24	POSITIVE DIVISORS OF 24	POSITIVE DIVISORS OF 24
POSITIVE DIVISORS OF 27	POSITIVE DIVISORS OF 27	POSITIVE DIVISORS OF 27



Name _____

* is one of the operations in The Table Game.

The Table Game

$+_{10}$	$-_{10}$	\times_{10}
\sqcap	\sqcup	\uparrow
T_D	T_M	\downarrow
$T_{<}$	$T_{>}$	T_P

Clue 1

This table for * has exactly three 0s in it.

*	4	8
8		
4		

* could be _____.

Clue 2

This table for * has exactly three 1s in it.

*	6	9
5		
7		

* is _____.

Name _____

* is one of the operations in The Table Game.

The Table Game

\div_{10}	$-_{10}$	\times_{10}
\sqcap	\sqcup	\uparrow
T_D	T_M	\downarrow
$T_{<}$	$T_{>}$	T_P

Clue 1

No two entries in this table for * are the same.

*	3	4
2		
3		

* could be _____.

Clue 2

All four entries in this table for * are the same.

*	2	6
3		
6		

* is _____.